

1. SPECIFICATIONS SUBJECT TO CHANGE WITHOUT NOTICE.
2. THE TERMS HDMI, HDMI HIGH-DEFINITION MULTIMEDIA INTERFACE, HDMI TRADE DRESS AND THE HDMI LOGOS ARE TRADEMARKS OR REGISTERED TRADEMARKS OF HDMI LICENSING ADMINISTRATOR, INC.
3. PRODUCT RESOLUTION IS 1920X1080.

NOTES: UNLESS OTHERWISE SPECIFIED

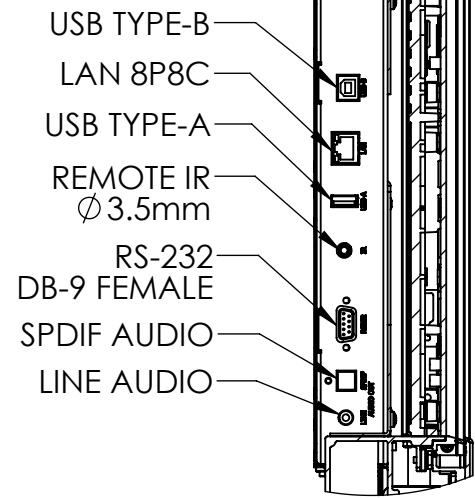
THIS DRAWING CONTAINS INFORMATION PROPRIETARY TO PLANAR SYSTEMS, INC.. ANY REPRODUCTION IN PART OR WHOLE WITHOUT THE WRITTEN PERMISSION OF PLANAR SYSTEMS IS PROHIBITED. THIS DRAWING IS SUPPLIED FOR INFORMATION, IDENTIFICATION, ENGINEERING, EVALUATION, AND/OR INSPECTION PURPOSES ONLY AND MAY NOT BE USED AS BASIS FOR THE MANUFACTURING OF PRODUCTS OR THE FURNISHING OF SERVICES TO PLANAR SYSTEMS OR TO ANY THIRD PARTY UNLESS AUTHORIZED IN WRITING BY PLANAR SYSTEMS.

PRODUCT	URL109-MFT
PART NO.	998-3768-XX

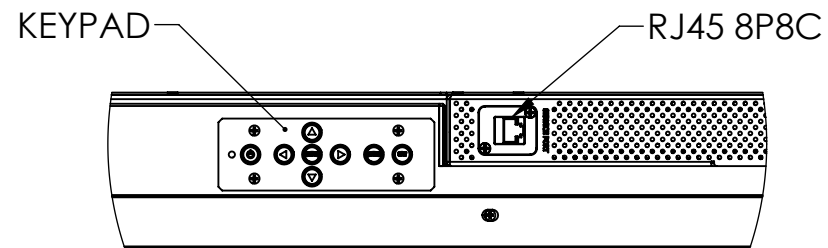
SHEET TITLE	PRODUCT SUMMARY
UNLESS OTHERWISE SPECIFIED DIMENSIONS ARE IN MILLIMETERS [INCHES]:	

DRAWN BY	CJJ
DRAWN DATE	24 Jan 24
SHEET	1 OF 6
SHEET SIZE	REVISION
B	A

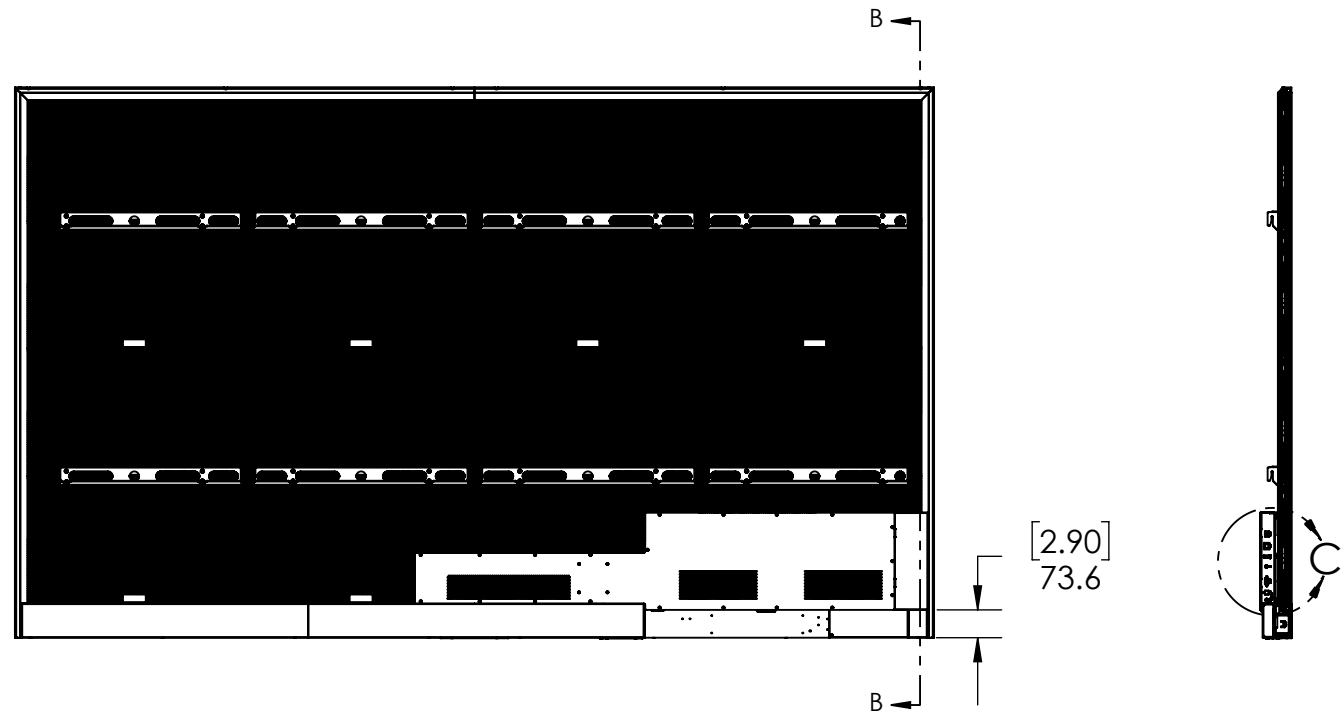




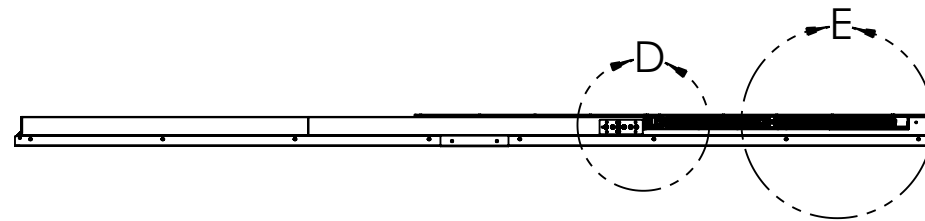
DETAIL C  
SCALE 1 : 4



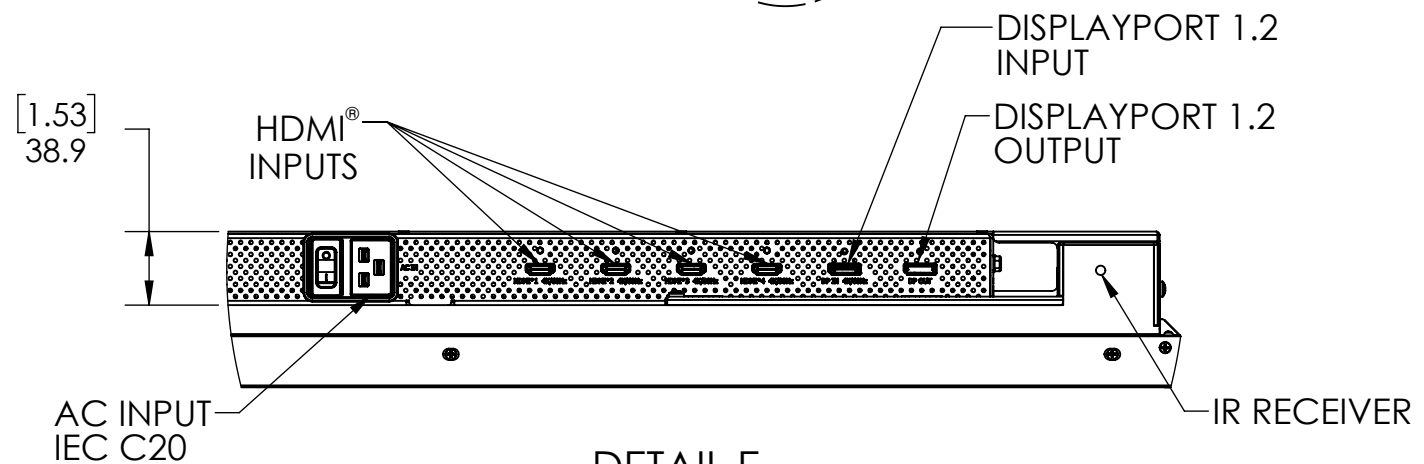
DETAIL D  
SCALE 1 : 4



SECTION B-B



DETAIL E  
SCALE 1 : 4



6. MAX HEAT LOAD 5120BTU/HR.
5. PRODUCT RATED 100-240V/15A (1500W) MAX INPUT.
4. SINGLE CORD CONNECTION NEMA 5-15P SUPPLIED.
3. INPUTS 1 AND 2 SUPPORT UP TO 4K/60Hz SIGNAL INPUT.
2. INPUTS 3 AND 4 SUPPORT UP TO 4K/30Hz SIGNAL INPUT.
1. SPECIFICATIONS SUBJECT TO CHANGE WITHOUT NOTICE.

NOTES: UNLESS OTHERWISE SPECIFIED

**PLANAR**

PLANAR SYSTEMS, INC.  
1195 NE COMPTON DRIVE  
HILLSBORO, OR 97006 USA

THIS DRAWING CONTAINS INFORMATION PROPRIETARY TO PLANAR SYSTEMS, INC. ANY REPRODUCTION IN PART OR WHOLE WITHOUT THE WRITTEN PERMISSION OF PLANAR SYSTEMS IS PROHIBITED. THIS DRAWING IS SUPPLIED FOR INFORMATION, IDENTIFICATION, ENGINEERING, EVALUATION, AND/OR INSPECTION PURPOSES ONLY AND MAY NOT BE USED AS BASIS FOR THE MANUFACTURING OF PRODUCTS OR THE FURNISHING OF SERVICES TO PLANAR SYSTEMS OR TO ANY THIRD PARTY UNLESS AUTHORIZED IN WRITING BY PLANAR SYSTEMS.

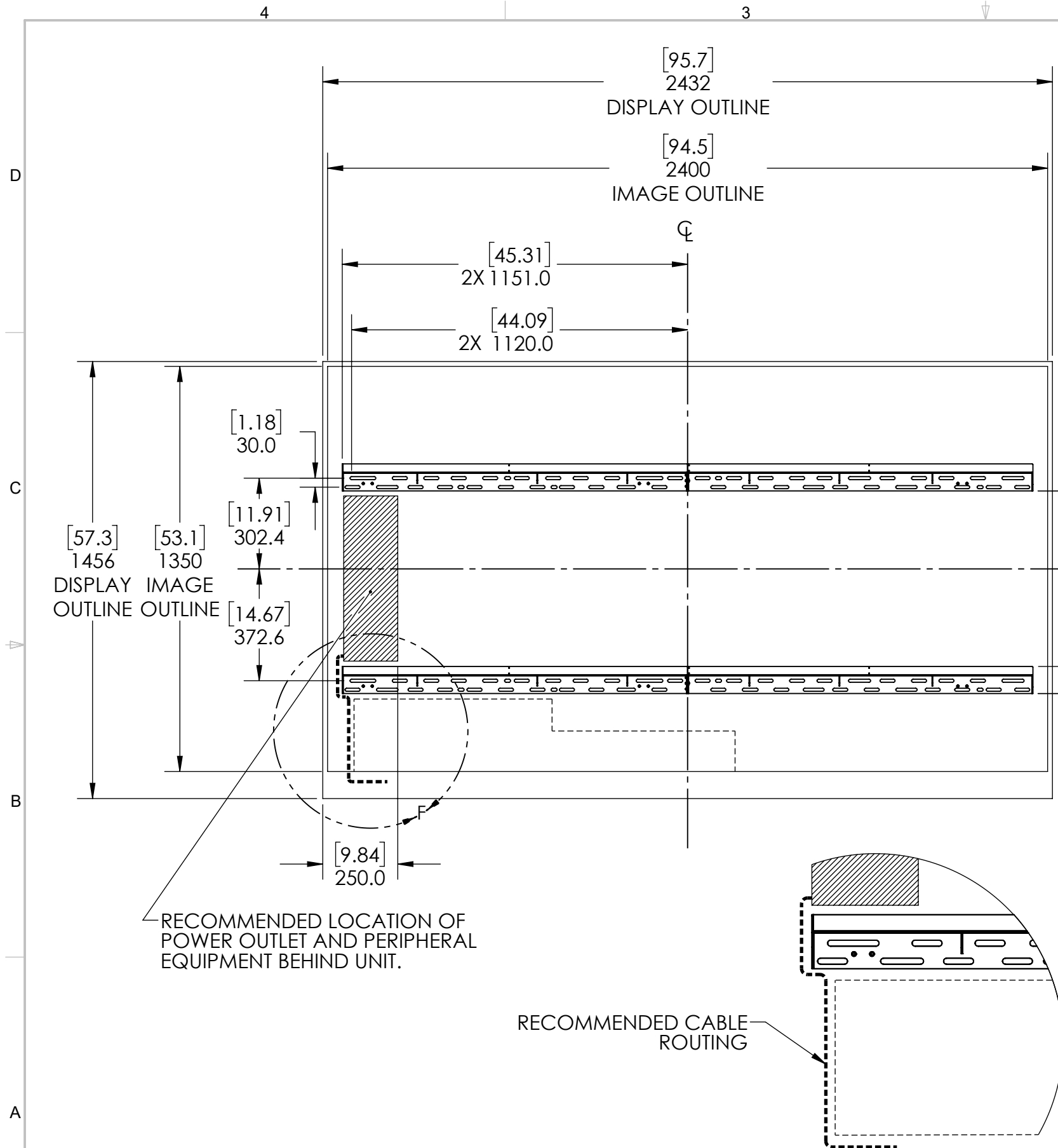
PRODUCT  
URL109-MFT

PART NO.  
998-3768-XX

SHEET TITLE  
PRODUCT  
OUTLINE - 2

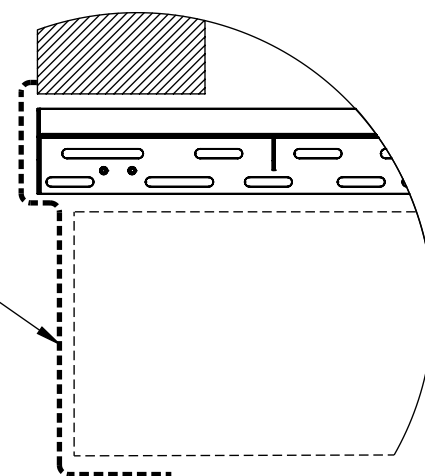
UNLESS OTHERWISE SPECIFIED DIMENSIONS ARE IN MILLIMETERS [INCHES].

DRAWN BY  
CJJ  
DRAWN DATE  
24 Jan 24  
SHEET  
3 OF 6  
SHEET SIZE  
B  
REVISION  
A



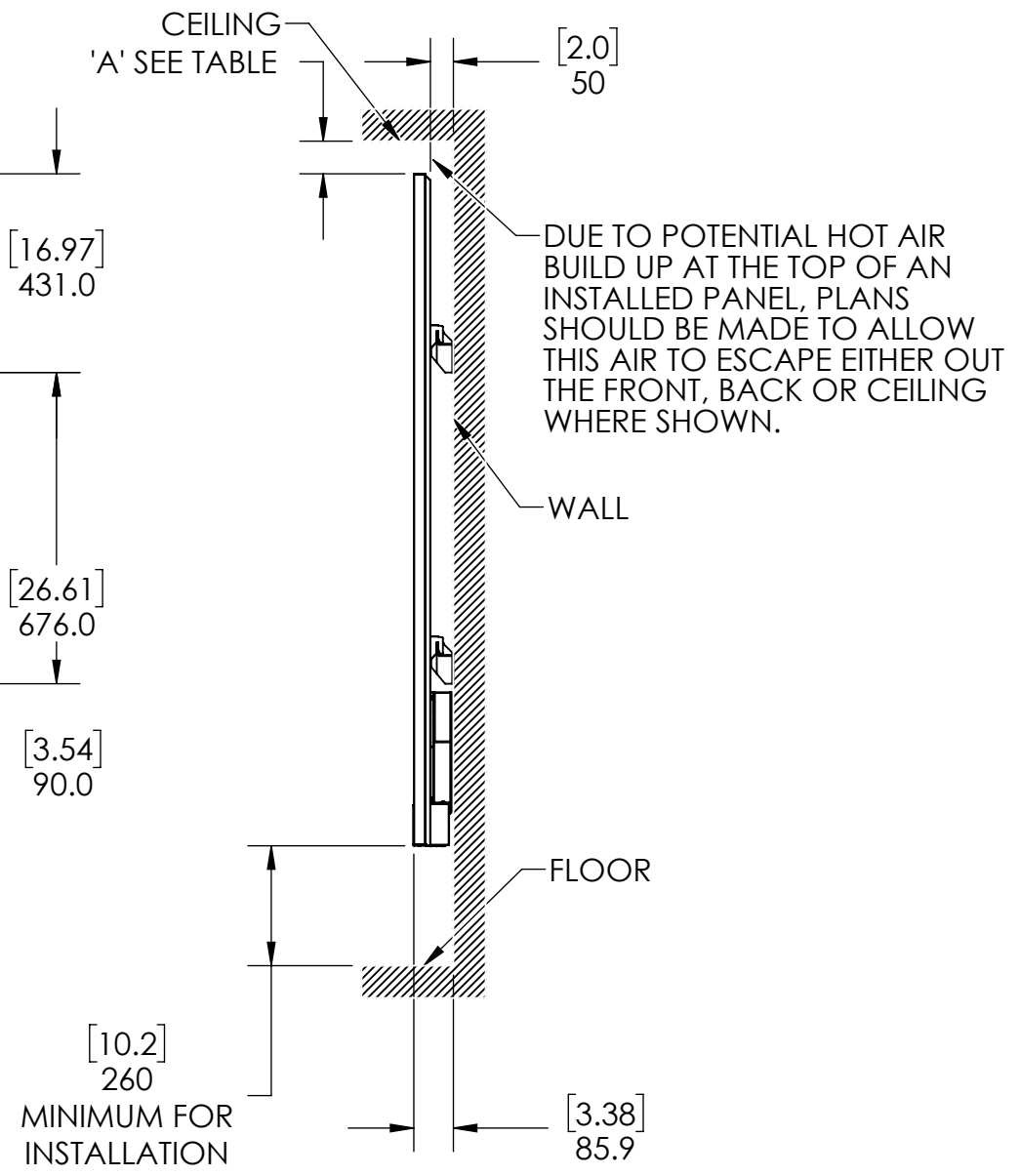
- 3. UNIT TOTAL WEIGHT IS 108KG/237LBS.
- 2. MOUNT CAPABLE OF SUPPORTING INSTALLATION TO STUDS. USE HARDWARE AND QTY APPROPRIATE TO SUPPORT UNIT.
- 1. SPECIFICATIONS SUBJECT TO CHANGE WITHOUT NOTICE.

NOTES: UNLESS OTHERWISE SPECIFIED



DETAIL F  
SCALE 1 : 8

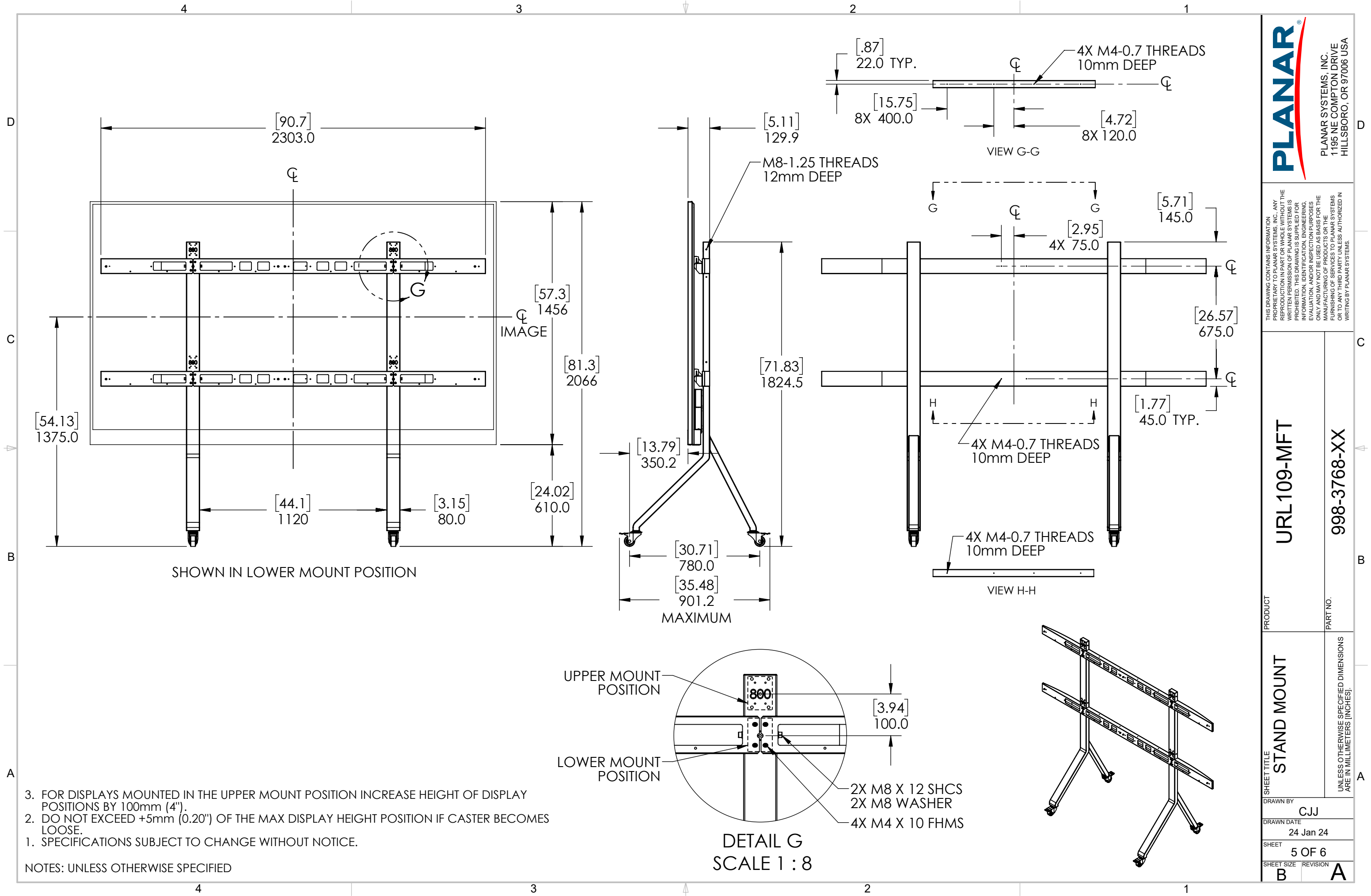
MINIMUM GAP TO CEILING		
	'A'	
CONDITION	mm	in
RECOMMENDED	102	4.0
TOOL ACCESS	75	3.0
TRIM INSTALL	60	2.4
COLUMN INSTALL	30	1.2

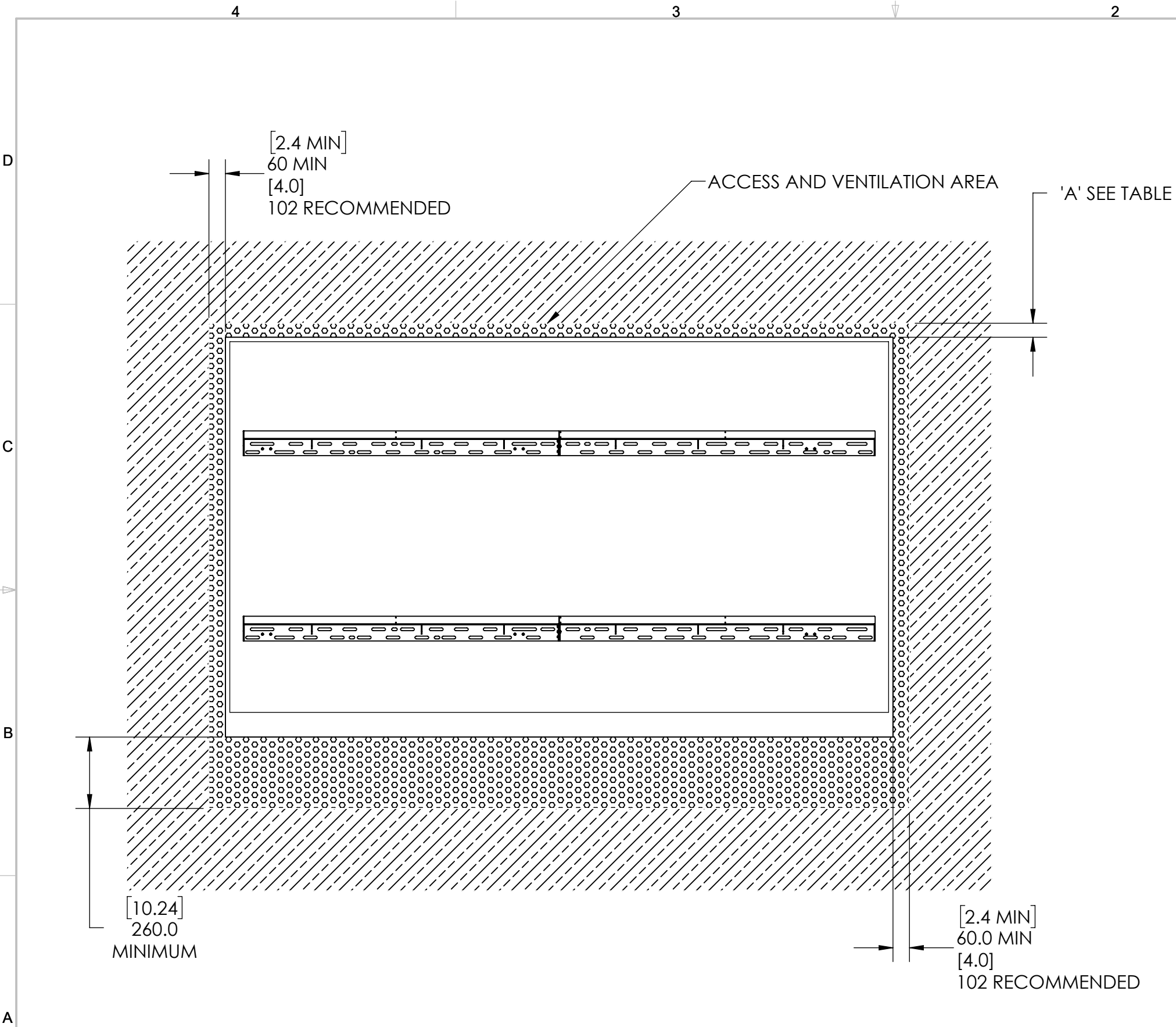


THIS DRAWING CONTAINS INFORMATION PROPRIETARY TO PLANAR SYSTEMS, INC.. ANY REPRODUCTION IN PART OR WHOLE WITHOUT THE WRITTEN PERMISSION OF PLANAR SYSTEMS IS PROHIBITED. THIS DRAWING IS SUPPLIED FOR INFORMATION, IDENTIFICATION, ENGINEERING, EVALUATION, AND/OR INSPECTION PURPOSES ONLY AND MAY NOT BE USED AS BASIS FOR THE MANUFACTURING OF PRODUCTS OR THE FURNISHING OF SERVICES TO PLANAR SYSTEMS OR TO ANY THIRD PARTY UNLESS AUTHORIZED IN WRITING BY PLANAR SYSTEMS.

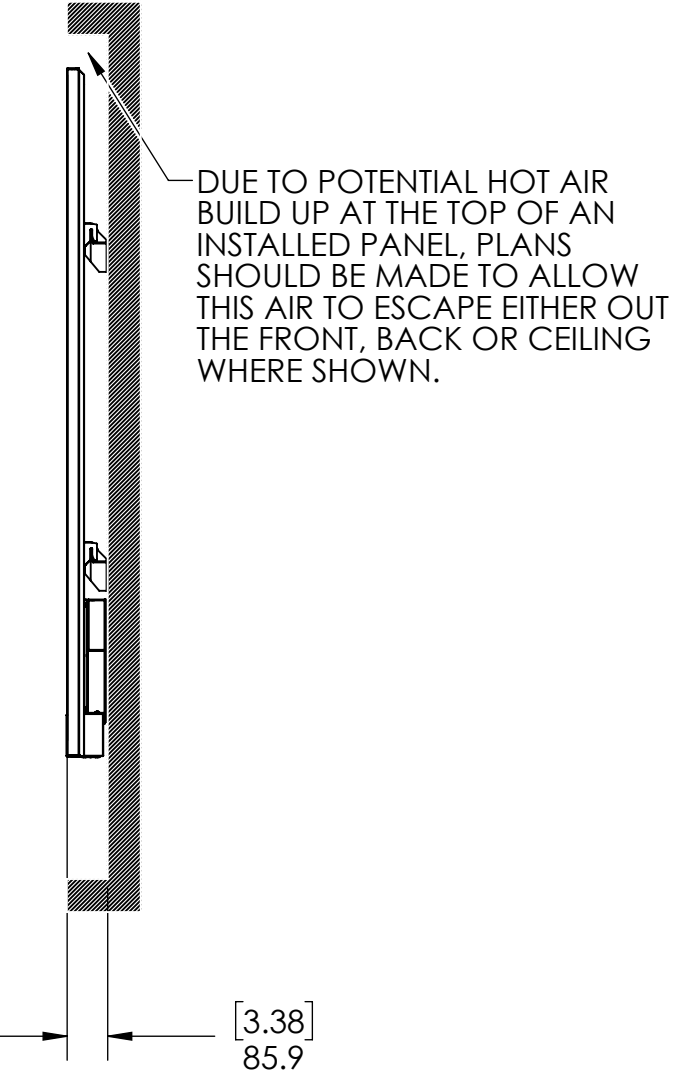
PRODUCT	
URL109-MFT	
PART NO.	998-3768-XX

SHEET TITLE	
WALL MOUNT	
UNLESS OTHERWISE SPECIFIED DIMENSIONS ARE IN MILLIMETERS [INCHES].	
DRAWN BY	
CJJ	
DRAWN DATE	
24 Jan 24	
SHEET	
4 OF 6	
SHEET SIZE	REVISION
B	A





MINIMUM GAP TO TOP OF RECESS		
	'A'	
CONDITION	mm	in
RECOMMENDED	102	4.0
TOOL ACCESS	75	3.0
TRIM INSTALL	60	2.4
COLUMN INSTALL	30	1.2



1. SPECIFICATIONS SUBJECT TO CHANGE WITHOUT NOTICE.
2. GAPS ON THE LEFT AND RIGHT OF THE PANEL MAY BE CLOSED BY A SOLID MATERIAL OR GRID MATERIAL WHICH CAN BE REMOVED FOR SERVICING.
3. GAPS ABOVE AND BELOW THE PANEL MAY BE CLOSED BY A GRID (MIN 50% OPEN AREA) WHICH CAN BE REMOVED FOR SERVICING.

NOTES: UNLESS OTHERWISE SPECIFIED

THIS DRAWING CONTAINS INFORMATION PROPRIETARY TO PLANAR SYSTEMS, INC. ANY REPRODUCTION IN PART OR WHOLE WITHOUT THE WRITTEN PERMISSION OF PLANAR SYSTEMS IS PROHIBITED. THIS DRAWING IS SUPPLIED FOR INFORMATION, IDENTIFICATION, ENGINEERING, EVALUATION, AND/OR INSPECTION PURPOSES ONLY AND MAY NOT BE USED AS BASIS FOR THE MANUFACTURING OF PRODUCTS OR THE FURNISHING OF SERVICES TO PLANAR SYSTEMS OR TO ANY THIRD PARTY UNLESS AUTHORIZED IN WRITING BY PLANAR SYSTEMS.

PRODUCT	
URL109-MFT	
PART NO.	
998-3768-XX	

SHEET TITLE	
RECESSED MOUNT	
UNLESS OTHERWISE SPECIFIED DIMENSIONS ARE IN MILLIMETERS [INCHES]:	

DRAWN BY	
CJJ	
DRAWN DATE	
24 Jan 24	
SHEET	
6 OF 6	
SHEET SIZE	REVISION
B	A